

NIHR Applied Research Collaboration (ARC) Greater Manchester



Health
Innovation
Manchester

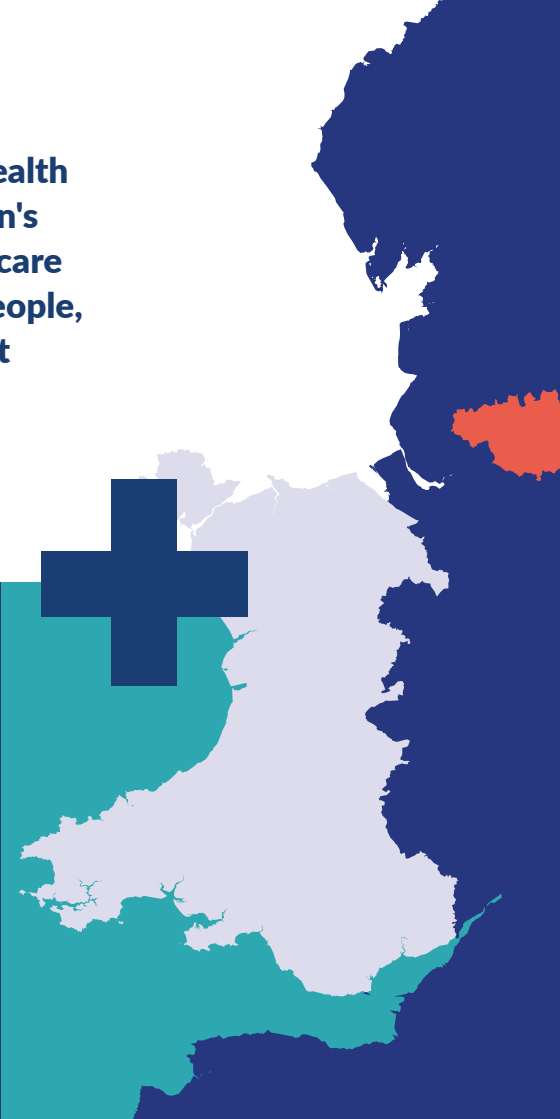
 www.arc-gm.nihr.ac.uk


 arc-gm@nihr.ac.uk

 [@ARC_GM_](https://twitter.com/ARC_GM_)



The National Institute for Health Research (NIHR) is the nation's largest funder of health and care research and provides the people, facilities and technology that enables research to thrive.





NIHR Applied Research Collaborations (ARCs) support applied health and care research that responds to, and meets, the needs of local populations and local health and care systems.

The NIHR ARC Greater Manchester is one of 15 ARCs across England, part of a £135 million investment by the NIHR to improve the health and care of patients and the public.

We are hosted by Manchester University NHS Foundation Trust, as part of Health Innovation Manchester (HInM), working in collaboration with the local NHS, universities, councils, research funders, patients and the public, to deliver and enable world-class research. HInM is a ground breaking partnership between the NHS, academia and industry, comprising the Academic Health Science Network (AHSN) and Manchester Academic Health Science Centre (MAHSC).

Patient and Community Involvement & Engagement

Public and Community Involvement & Engagement (PCIE) sits at the very heart of NIHR ARC-GM, working as part of Health Innovation Manchester (HInM) and alongside other Greater Manchester organisations to ensure that our approach aligns with NIHR's future strategy; prioritising innovative co-production and co-creation methods for inclusive partnership working to reflect population needs and address inequalities.



Our vision is that PCIE will be integral to NIHR ARC-GM through:

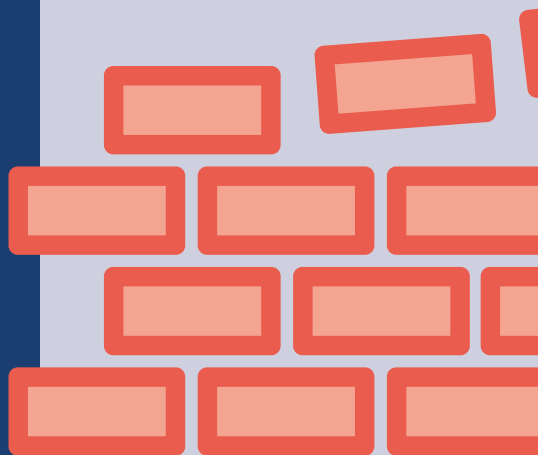
- Development of a diverse PCIE core panel, which will reflect our Greater Manchester communities.
- Fostering opportunities for meaningful co-production of research and implementation within appropriate research themes.
- Engaging with the communities who will benefit from our research to ensure that their voices are heard.

Capacity Building

“We are committed to building capacity to use and apply research across the Greater Manchester region by supporting and developing research and implementation skills.”

Our key focuses are:

- Funding, supporting and developing clinical and non-clinical academic trainees;
- Supporting and developing research and research support staff;
- Developing and sustaining capacity building partnerships across NIHR centres and with NHS and care partner organisations;
- Providing health research and implementation learning opportunities



Our research activity will be pivotal in finding new and better ways of preventing illness and delivering care, ensuring that Greater Manchester continues to be at the leading edge of health innovation, care and treatment.

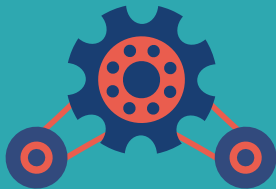
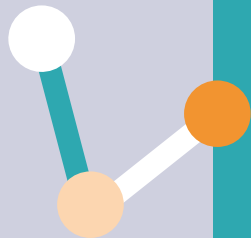
We have five core areas of applied research focus:

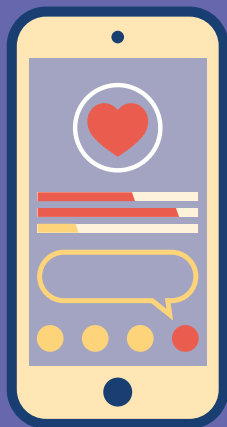
- Digital health
- Economic sustainability
- Healthy ageing
- Mental health
- Organising care

And two cross-cutting themes:

- Evaluation
- Implementation science







Digital health

“ We are committed to apply rigorous methods to design, implement and evaluate new digital technology in the NHS to support disease prevention, self-management, integrated and personalised care. ”

Economic sustainability

“ We will work to further understand the demand and supply influences on the economic sustainability of health and care systems by using research evidence to co-design solutions and evaluating initiatives to increase economic sustainability. ”





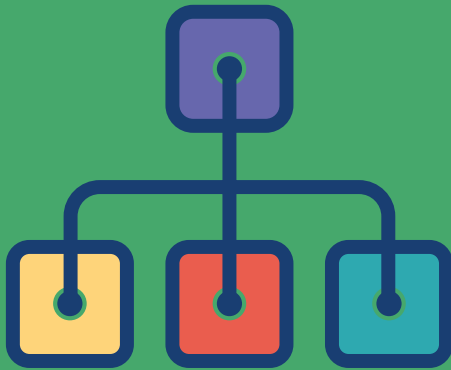
Healthy ageing

“ We undertake research about healthy ageing to enable people to live longer, healthier and socially connected lives in safe environments. ”

Mental health

“ We will develop, evaluate and implement new initiatives to protect, sustain and improve mental health and resilience in local communities, marginalised populations and patient groups. ”





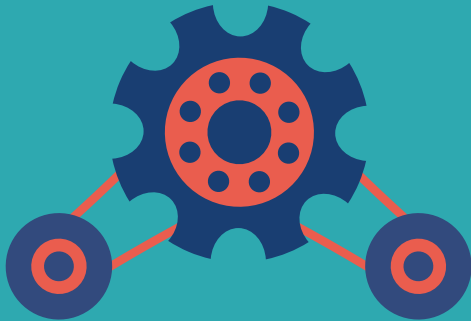
Organising Care

“ We will provide high-quality evidence to inform how the planning and delivery of transformations around workforce and integration are impacting on health and social care. We will take particular interest in how transformations are impacting on efficiency in the system and equitable access to health and social care. ”

Evaluation

“ We will provide expertise regionally and nationally to support high quality rapid evaluation for to enable evidence-based innovation in health and care settings. We will enhance relevance by ensuring research includes patient populations with the greatest need. ”





Implementation science

“ We will conduct world-leading research and methodological development in implementation science and knowledge mobilisation, whilst providing expert support and capacity development to improve the uptake of evidence-based innovation, policies and practices in Greater Manchester and beyond. ”

